

## TWENTY

MC Lab - 2020



### DESCRIPTION

Rug with saddle band and yarn border, available in 15 colors. Thanks to the cleanliness and clarity of the shapes, it is ideal for spaces with a strong character where you don't want to give up the softness of a rug.

### TECHNICAL INFORMATION

#### Typology

Rug with saddle band and yarn border

#### Specifications

Velvet, 100% polyester  
Fire resistance BFL-S1  
Saddle band

#### Dimensions

cm Ø350 | in Ø137"4/5  
cm 350x250 | in 137"4/5x98"3/7

### DESCRIZIONE

Tappeto fascia in cuoio e bordo filato, disponibile in 15 colorazioni. Grazie alla pulizia e alla chiarezza delle forme, è ideale per ambienti dal forte carattere estetico in cui non si vuole rinunciare alla morbidezza di un tappeto.

### DESCRIZIONE TECNICA

#### Tipologia

Tappeto con fascia in cuoio e bordo filato

#### Caratteristiche tecniche

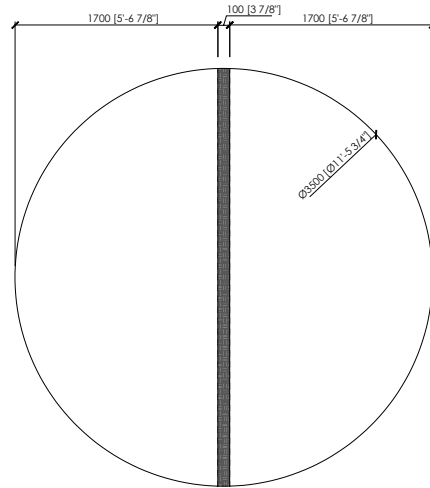
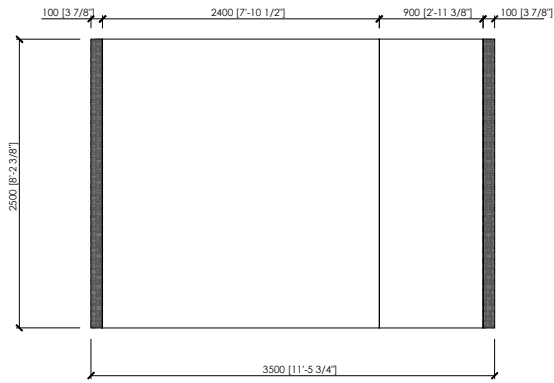
Velluto, 100% poliestere  
Resistenza al fuoco BFL-S1  
Fascia in cuoio

#### Dimensioni

cm Ø350  
cm 350x250

**TWENTY**

MC Lab - 2020



**COLORS RUGS | COLORI TAPPETI**

03 BIANCO



06 LATTE



43 ECRU'



49 TORTORA



45 TORTORA SCURO



94 PERLA



95 GRIGIO CHIARO



96 GRIGIO



97 ANTRACITE



99 NERO



290 VERDE



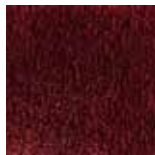
680 TERRACOTTA



79 BLU



19 BORDEAUX



42 OCRA



## TWENTY

MC Lab - 2020

### COLORS SADDLE BAND | *COLORI FASCIA IN CUIO*

